



# Community Meeting Q-Loop and the Dickerson Power Plant

June 15, 7 p.m.  
Gothic Barn at Linden Farm





Sponsored by:

Sugarloaf Citizens Association

Montgomery Countryside Alliance

Sugarloaf Alliance





## AGENDA

- Welcome: Steve Findlay, President, Sugarloaf Citizens Association
- Q-Loop and Data Center violations: Steve Black, President, Sugarloaf Alliance
- Litigation Concerning Private Property and Q-Loop: Michele Rosenfeld, Esq.
- Brief History of the Dickerson Power Plant Property: Steve Findlay
- New Ownership—Plans & Concerns: Caroline Taylor, Executive Director,  
Montgomery Countryside Alliance
- Q&A—Open Discussion
- Adjourn

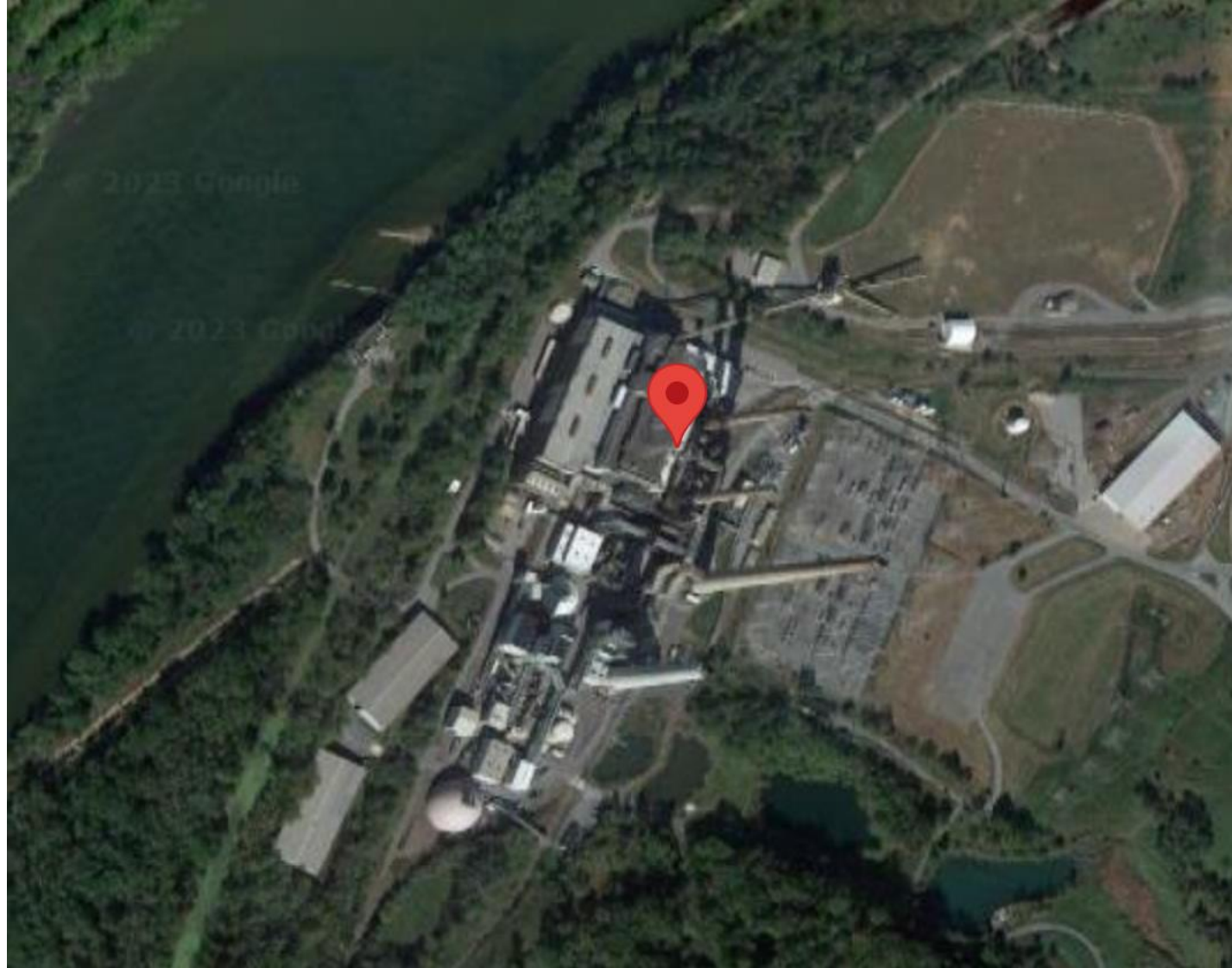




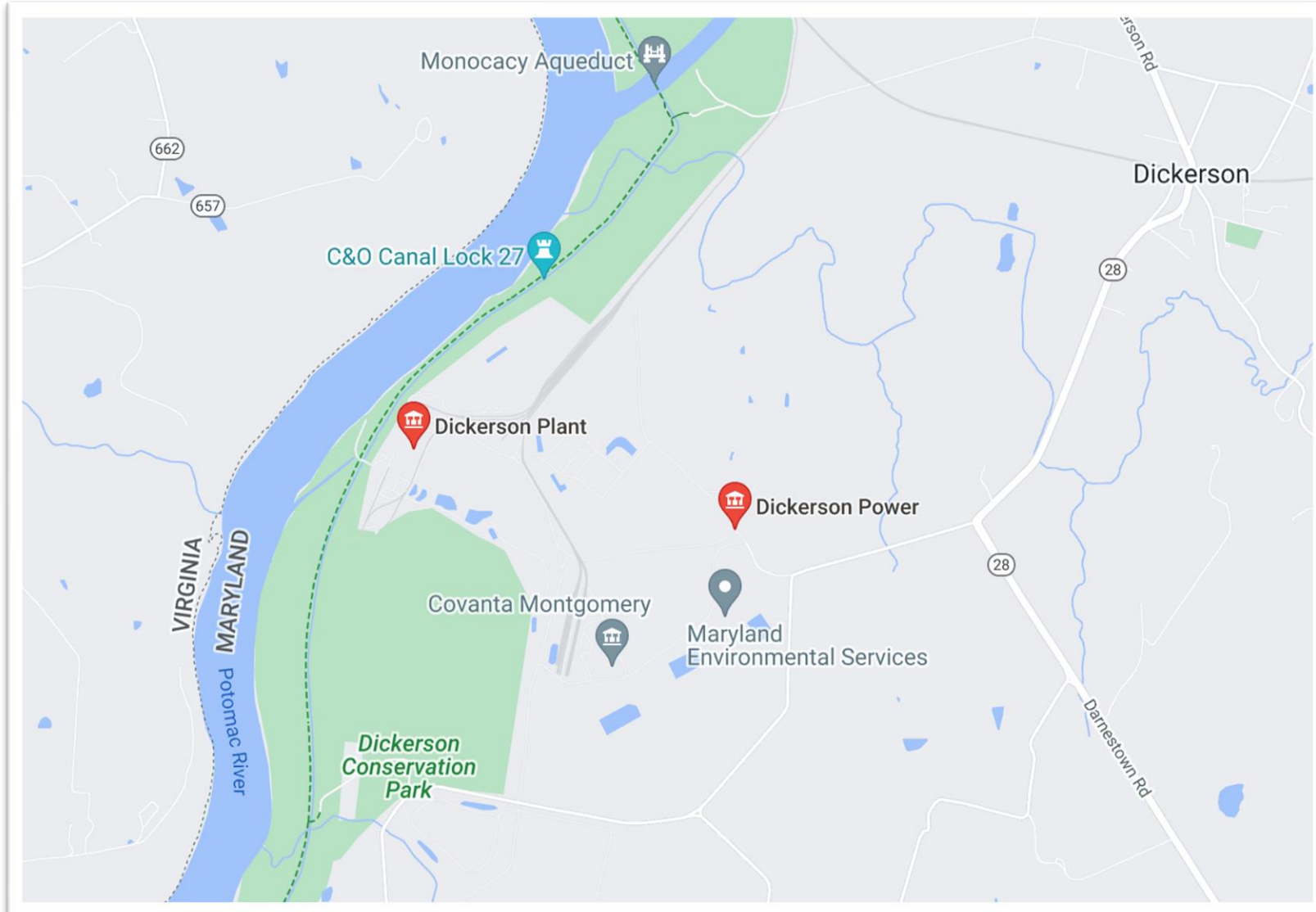
## Brief History - Power Plant Property

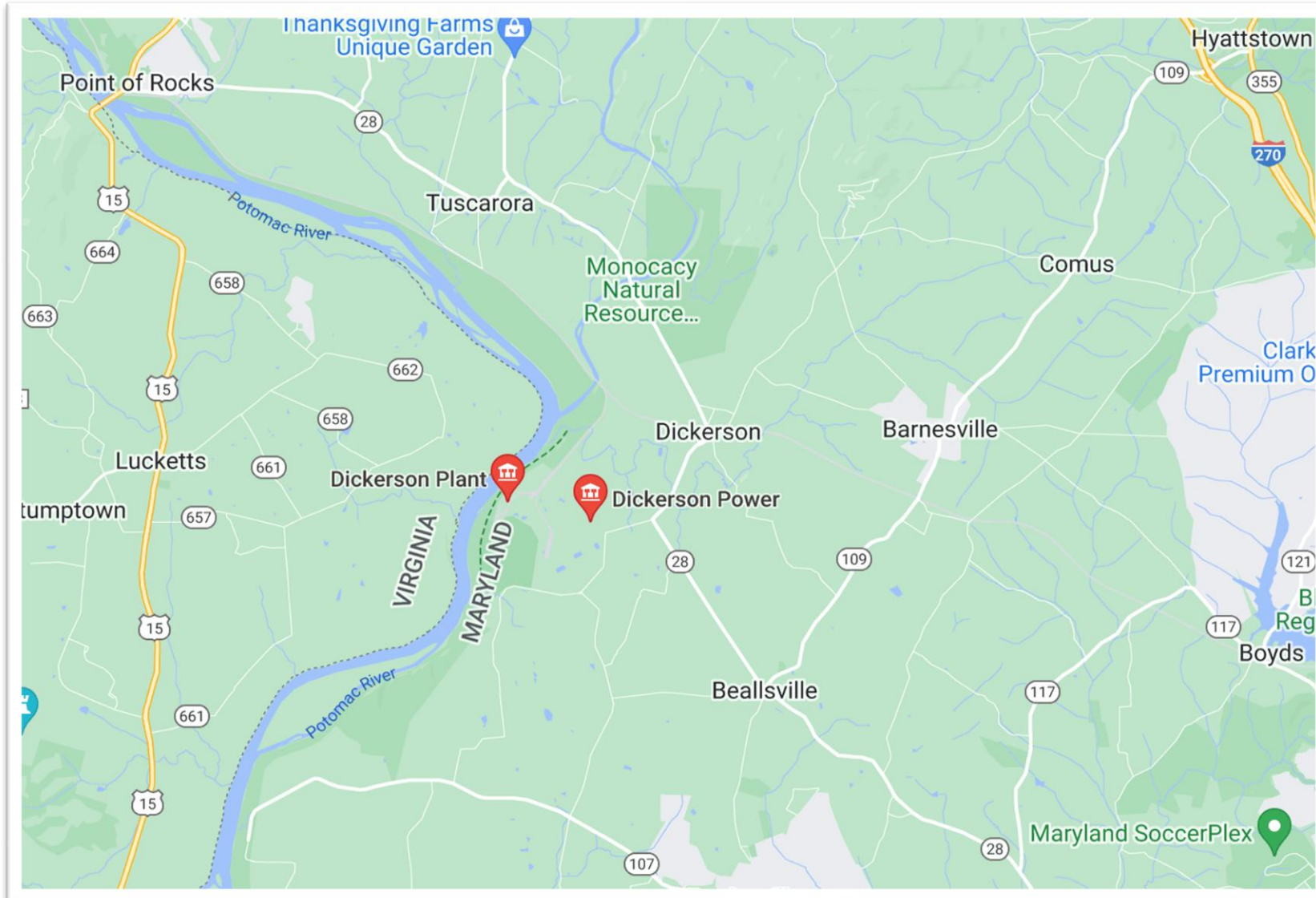
- ❑ ~ 1,000 acres
- ❑ Electrical power generation, trash disposal, and compost
- ❑ Energy: Coal, natural gas/oil, trash incineration
- ❑ Coal-fired plant – 1959-60
- ❑ Compost facility - 1983
- ❑ Gas-powered plant -1992
- ❑ Trash incinerator - 1995



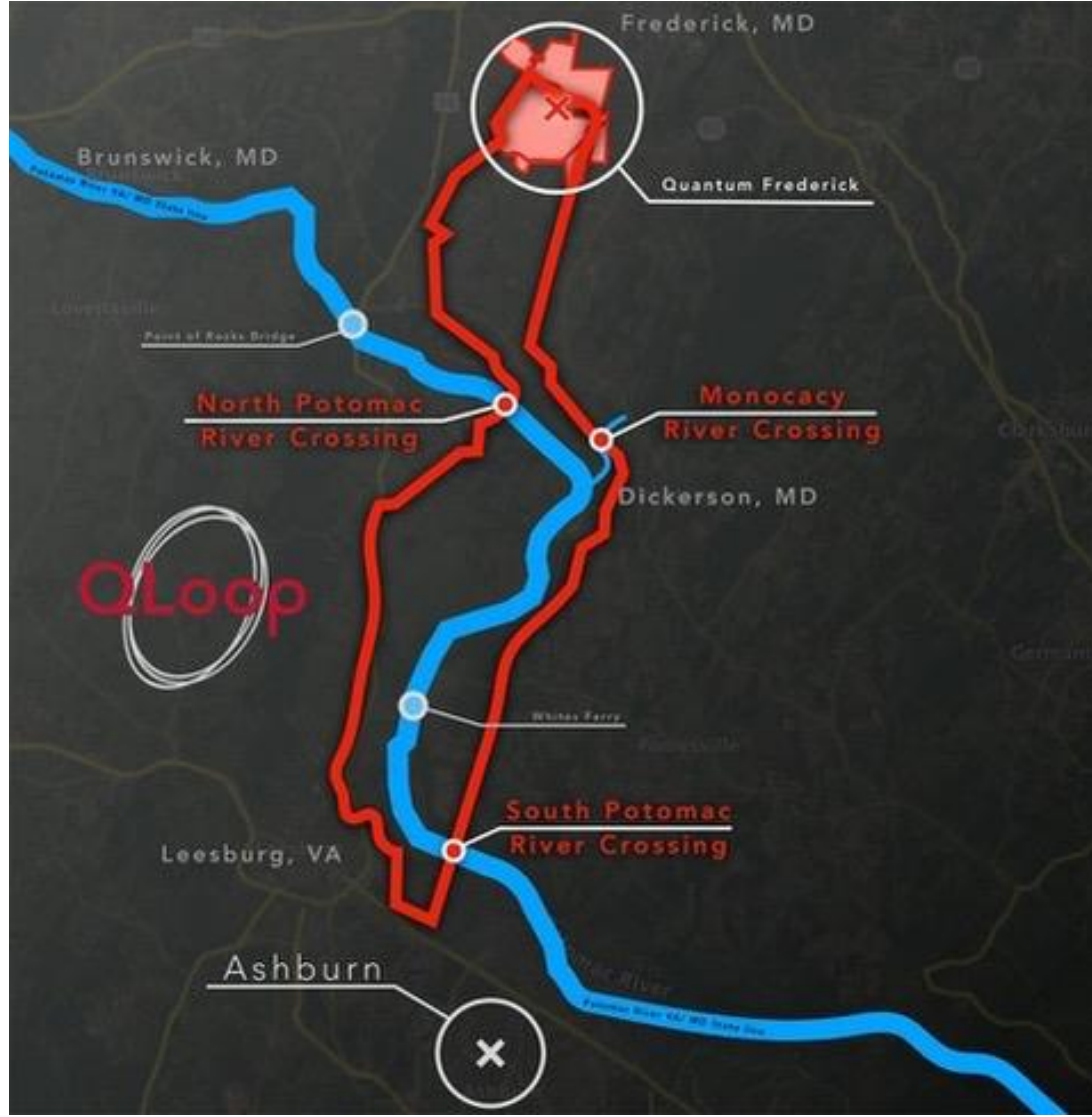














## Ownership

- Pepco built + operated: 1960s-2000
- Sold to Mirant in 2001
- Mirant merged with Gen-On Energy in 2010
- Gen-On created subsidiary NRG in 2012
- Coal plant was shuttered in 2020
- Gas plant still operating. Gen-On runs it now (NRG dissolved)
- Pepco still owns power lines and ground below them
- Terra Energy bought 740 acres in 2022





## Compost

- “Montgomery County Yard Trim Composting Facility”
- 118 acres, including 55-acre asphalt pad
- ~ 65,000 tons a year of leaves and grass; 77,000-ton capacity
- Product: Leaf Grow, sold in bulk and bags, for gardens
- Enterprise going strong
- Possibility of adding a food waste compost facility
- SCA has oversight





## Incinerator

- Operated by Covanta with oversight by Northeast Maryland Waste Disposal Authority
- 55,000 tons of garbage and waste per year
- FIRES, POORLY RUN, INEFFICIENT, POLLUTING
- #1 industrial polluter in Montgomery County!
- SCA has advocated closure for a decade; alternatives proposed
- Does not warrant designation as “renewable” energy
- County Executive and Council have pledged to close, but likely not until 2026; replacement destination for trash is needed





## Hazards and Violations

- ❑ Persistent environmental AND ZONING violations from beginning
- ❑ Industrial area boundaries not complied with Ag land degraded
- ❑ Pollution: CO<sub>2</sub>, mercury, dioxin, sulfur dioxide, nitrogen oxides, PFAS
- ❑ Exacerbates climate change
- ❑ Abt Associates study in 2010: Hundreds of EXCESS ills and deaths per year
- ❑ Chronic bronchitis, asthma, congestive heart failure, heart attacks, lung disease, pneumonia





## Terra Era

- Terra Energy, a subsidiary of Terra Innovations Inc.
- 740 acres, including site of the shuttered coal fired plant
- 255 acres heavy industrial
- 485 acres Ag Reserve or agricultural
- Demolish coal-fired facility
- Retain existing energy infrastructure
- High tech energy/battery storage
- Solar energy facility – how many acres?
- DATA CENTERS!**





**Thank you for attending this community meeting**

- **Stay connected with these issues by visiting our websites**
- **Be active advocates for our environment**

**Become a Member**

- **[Sugarloaf Citizens Association](#)**
- **[Montgomery Countryside Alliance](#)**
- **[Sugarloaf Alliance](#)**

